

Place at the Table

Imagine If. Space CIC

What is a Local Place Plan and how can I get involved?

The illustration features a bright sun, birds, and colorful bunting flags at the top. Below, there are green hills, a tree, and a row of silhouettes representing a diverse community: a person with a stroller, a child, a person in a wheelchair, a person walking, a family, and a person with a bag. A house with a clock on its wall is also depicted. The overall style is colorful and community-oriented.

MUCKHART LOCAL PLACE PLAN LAUNCH

29TH MARCH '25 2-4PM
CORONATION HALL, MUCKHART

Share Ideas for future of Muckhart,
plus spring cakes & treats! All welcome!

Meet the Team



Paul Ede
Director
Place at the Table



Chiara Fingland
Director
Imagine If . Space



Ellie Burroughs
Director
Imagine If . Space

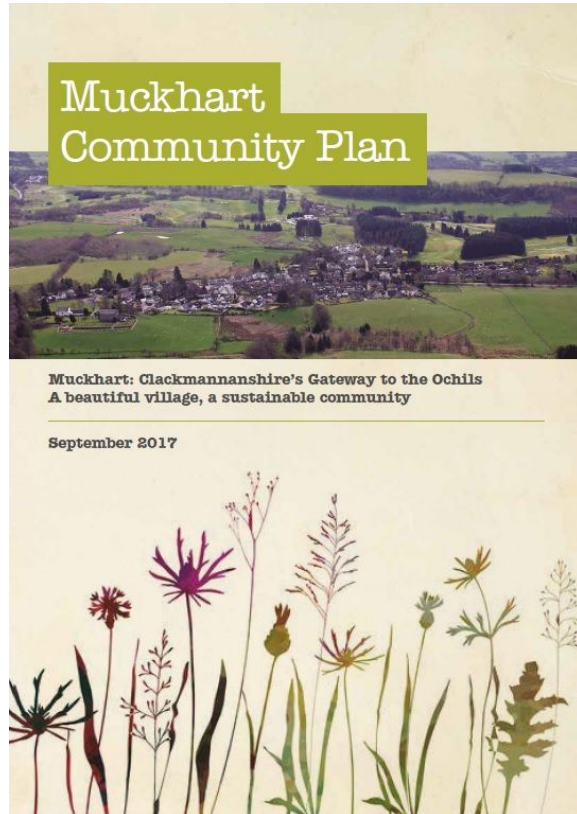




What are we producing?



A Community Action Plan *and* a Local Place Plan



Infrastructure

Action Plan & Policies

To improve the overall safety of our roads and further develop our footpaths and cycle ways, throughout the Muckhart area, for all users.

Objective	To work with all agencies and other interested parties to develop a Strategy to improve overall road safety within our community.
Priority Actions	<ul style="list-style-type: none">Set up MCC Road Safety Working Group involving members of the communityPrepare a suggested list of new measures and priorities and consult with communityConsult on specific proposals with all relevant agencies and organisations (e.g. Council, Police, etc.)Prepare and agree Strategy and Implementation Plan for improving road safety and agree with MCC
Led By	MCC member: Mike Wilson

Objective	To develop a Strategy to improve, develop & extend foot & cycle paths, within the Muckhart area, for all users within the community, and to provide access to the wider network of neighbouring 'Active Routes' via new, connecting foot and cycle paths.
Priority Actions	<ul style="list-style-type: none">Set up MCC Working Group, including interested persons and partners (e.g. landowners, Paths for All (PfA))Consult on specific issues where required (Council (e.g. Core Paths), PfA, landowners, etc.)Agree priorities for foot and cycle path improvements and developments with MCCPrepare and agree Strategy and Implementation Plan for improving, developing and extending foot and cycle paths
Led By	MCC member: Mike Wilson

Note: the above Priority Actions are extracts from Action Plans within the Muckhart Community Plan

Muckhart Community Plan - Review of Delivery 2017 – 2024

It is now 7 years since the Muckhart Community Plan was developed in 2017. The following table provides a review of projects identified in the plan as well as others which have emerged.

Complete	In process	On hold	Abandoned
----------	------------	---------	-----------

CAP Key area	Project	Type	Status	Notes
Image of the Village	Improved attractiveness of Muckhart as a conservation village	Proposed in CAP		<ul style="list-style-type: none"> Nature Trail developed along school path. Pot and Bloom group maintain and add planters and increase bulb plantings with community support
	Possible introduction of an attractive area near the church with parking, picnic facilities, and info/ interpretation boards.	Proposed in CAP		<ul style="list-style-type: none"> Church of Scotland permission in principle obtained, on hold following covid though Glebe Field being planted as orchard area with cabin for storage
	Feasibility study on hall area improvements including car park and relocation of playpark	Proposed in CAP		<ul style="list-style-type: none"> On hold after preliminary discussion with Hall Committee – wish for a more strategic feasibility study not one only for village square concept
Housing	Housing Development Policies and Guidelines for Housing Development document and improved input to planning issues including LDP 2	Proposed in CAP		<ul style="list-style-type: none"> Doc approved by MCC in 2023/24. MCC responses to MIR and LDP2 consultations submitted
	Setting up of Development Trust to manage available funds	Proposed in CAP		<ul style="list-style-type: none"> Options report completed and agreement if suitable project available and community support Possible Directors identified
	Work with developer and residents to ensure successful integration of Meadowside development			<ul style="list-style-type: none"> Regular communication with developer to discuss issues



A Local Place Plan is ...
an expression of community's aspirations which can
influence local spatial planning policy...

1. Setting out priorities to regulate **future development** in an area
2. Helping communities to **develop and deliver** their own projects

It can also be a **hybrid document** with elements of
a **Community Action Plan**, covering *all* the issues that your place needs
to thrive.



Influencing Regional Plans

CAP



**Wellbeing
Local Outcomes
Improvement Plan**

2024-2034

LPP

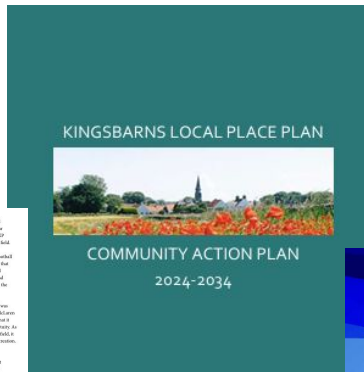


Local Outcome Improvement Plan
(LOIP)

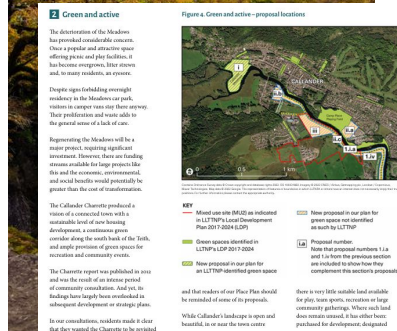
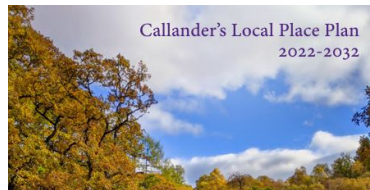
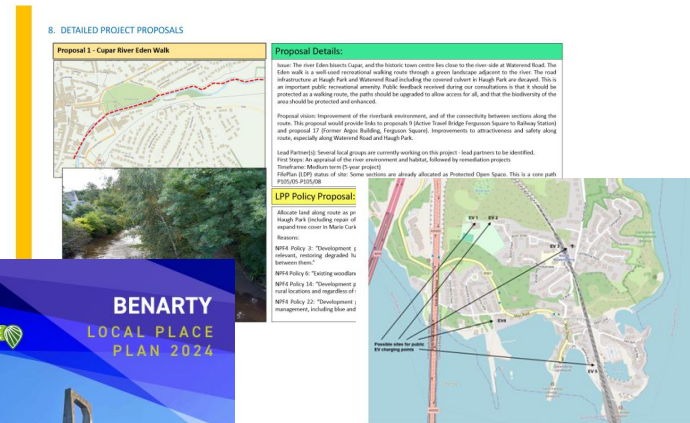
Local Development Plan (LDP)

Example Local Place Plans - all shapes & sizes

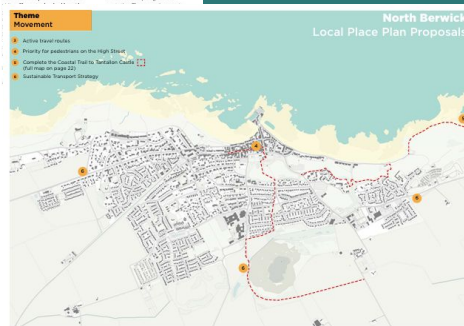
Kingsbarns LPP



Cupar Ward with Monimail Community Council LPP



Callander LPP



North Berwick LPP



Benarty LPP

NQLPound found concerns about climate change and wanted the village to be Climate Ready

- NPF4:
- Policy 1 requires significant weight will be given to the global climate and nature crises.
 - Policy 2 specifies that development proposals to retrofit measures to existing developments that reduce emissions or support adaptation to climate change will be supported
 - Policy 13 encourages for electric vehicle charging infrastructure.

FilePlan: Policy 11 emphasises the importance of low carbon usage.

North Queensferry LPP

Look up LPP Registers
for examples - these can be found on
Local Authority webpages.



2: Develop a Community Garden

CAP Project

- Lead organisation: CLEAR
- Deliver within 2 years
- Partners: Fife Council, residents
- First Steps: 1. Secure funding, 2. Buy land

LPP Proposal

- Alignment with NPF4 policies:
- Policy 9 (Brownfield) and
- Policy 25 (Community Wealth Building)
- Secure allocation (PP in principle) for change of use from former pub to community garden



Sample Map & Image

[\(Open Street Maps\)](#)



CAP vs LPP | Projects vs Proposals

Plan	Community Action Plan (CAP)	Local Place Plan (LPP)
Focus	COMMUNITY Development	Community DEVELOPMENT
Scope	Projects and initiatives of ALL types	Proposals relating to the use and development of land and buildings which are controlled by the planning system
Outputs	Delivery plan (lead org, timeframes, partners, first steps, indicative costs). No reasons required.	'Spatial vision' (maps!). Arguments for proposals to be accepted into the Local Development Plan to control future development. No delivery plan required.
Leadership	Community-led	Community-led
Outcomes	Community organising, securing funding, planning for community-led delivery.	Community organising & Influencing spatial planning system
Traction	Community agency, advocacy	Decision by Planning Authority



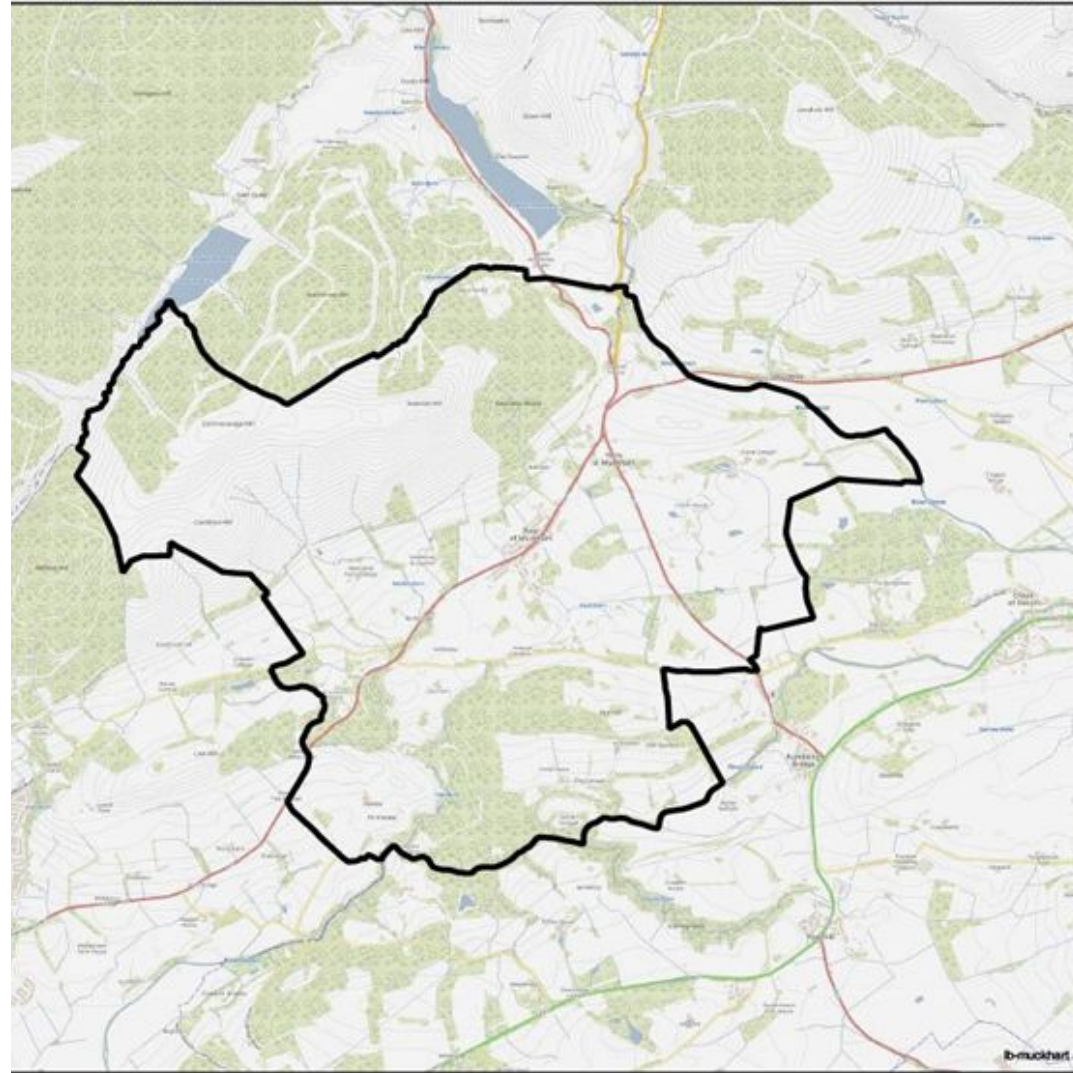
LA makes final decision for LDP



Local Development Plan (LDP)



LPP Boundaries



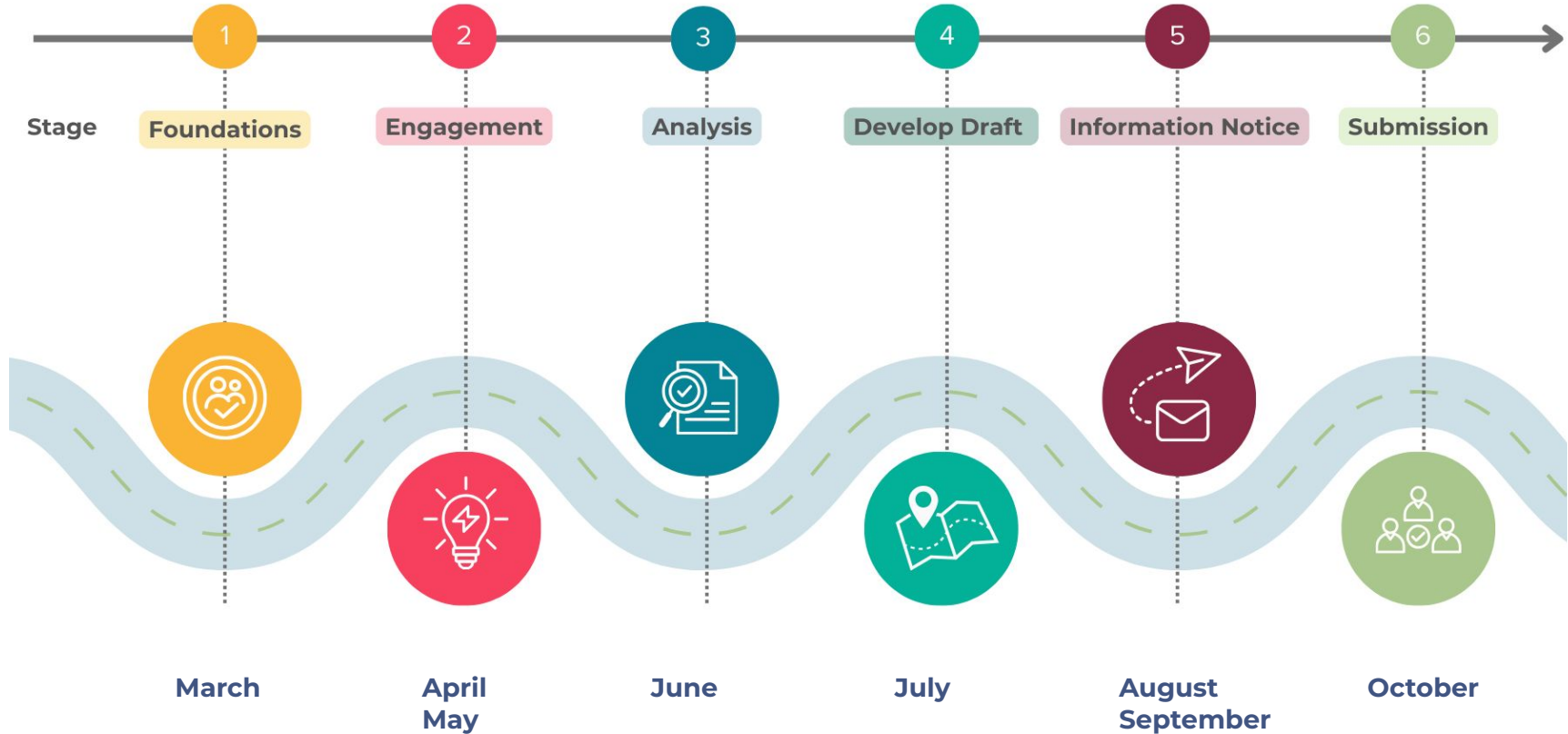
Developed by a Community Body: Muckhart Community Council



- Celia Norton
- Marion Riddell
- Danny Conroy
- Stuart Dean
- John Anderson
- Matthew Pease
- Patrick Thompson
- Johnathon Bacon.



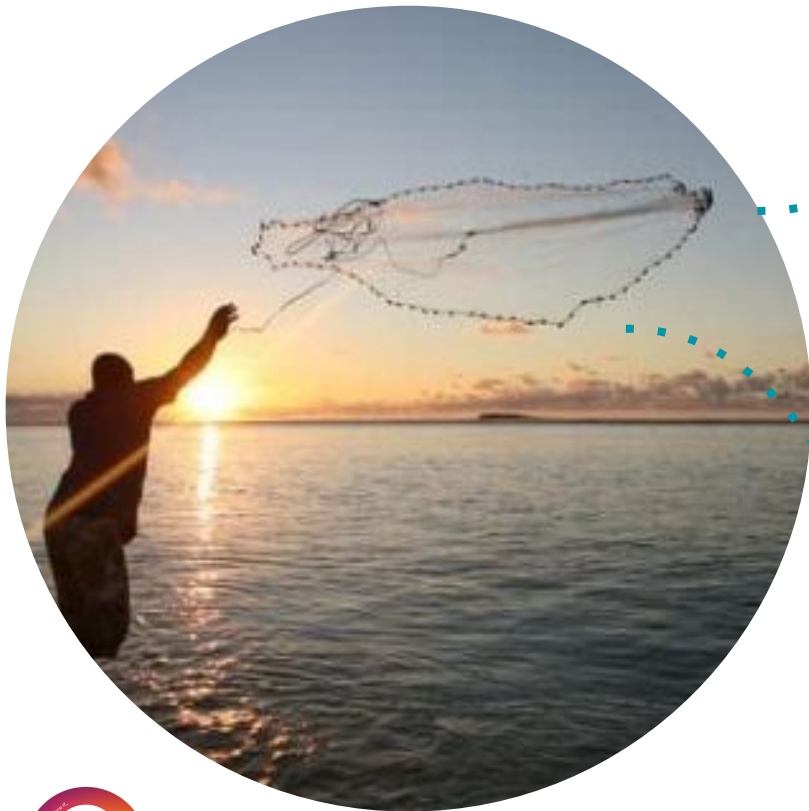
Stages and Milestones





**What kinds of things
can we talk about?**





Land & Development Quiz

1. Setting up a youth project
2. Measures to control traffic speeds
3. Making our town centre better
4. Protecting our heritage buildings
5. Dog fouling
6. Developing more affordable homes
7. Setting up an annual gala day
8. Adapting our town to the impacts of climate change
9. Proposals to change the policy text of the LDP
10. Controlling short-term lets
11. Securing primary health care for the area
12. Ideas for paths and cycle routes



Land & Development Quiz

1. Setting up a youth project
2. Measures to control traffic speeds
3. Making our town centre better
4. Protecting our heritage buildings
5. Dog fouling
6. Developing more affordable homes
7. Setting up an annual gala day
8. Adapting our town to the impacts of climate change
9. Proposals to change the policy text of the LDP
10. Controlling short-term lets
11. Securing primary health care for the area
12. Ideas for paths and cycle routes

CAP

CAP

LPP

LPP

CAP

LPP

CAP

LPP

LPP

LPP

CAP

LPP



Community Action Plan

Working together and council services

Sustainability and the Environment

Education

Business Development

Active Community

Roads

Public Services

Local Place Plan

Land and Buildings

Parks and Recreation

Active Travel

Housing Development & Policy

Image of the Village



A LPP is an extra arrow in your quiver

A statutory right to prepare

De-risking development by communities

Suggestions for how developer contributions are spent -
try and influence developer behaviour

Precision for regulatory policies - e.g. Nature Networks

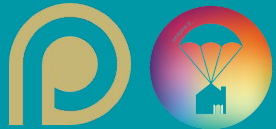
Starting transparent conversations with landowners and
service providers about long-term aims. Dialogue long
before arbitration.

A public record of Muckharts position to influence the
LDP



**What will make Muckhart
an even greater place to
live over the next 10 years?**

Pair and Share





How to get involved



[muckhart.org.uk/
lppcap/](https://muckhart.org.uk/lppcap/)

Your one-stop
shop for info
through the
whole process



Muckhart Community

HOMELOCAL GROUPSCOMMUNITY LINKSCOMMUNITY COUNCILCONTACT US

LOCAL PLACE PLANMUCKHART COMMUNITY COUNCIL

DEFIBRILLATOR

The Defibrillator is situated outside the Coronation Hall

Full instructions can be found [here](#).

Web accessibility

Web accessibility statement

Advertisers & Sponsors

Muckhart Inn

Local Place Plan

ONLINE SURVEY ENDS EASTER MONDAY (MIDNIGHT, 21st APRIL)

SHOW US WHAT NEEDS TO CHANGE!

Drop pins on our map of Muckhart and surrounds to let us know what issues you see, what you would like to change and where you would like that to happen. [CLICK ON THE MAP TO START OUR SURVEY](#)

This survey is just the start of the journey. Face to face discussions will happen in March. [Sign up to our eNewsletter](#) to stay informed! And download our [one-page explainer](#) [here](#).

Recent News and Events

[Natural Flood Management project success at Holyrood Climate Action Awards!](#)

[Community Transport Update](#)

[EDF Renewables Burnfoot Hill Community Fund](#)

[Muckhart Community Transport Surveys](#)

[Muckhart Community Transport Meeting – 28th April 2024](#)

Slideshow



One pager

What is a Local Place Plan (LPP)?

A LPP and CAP is a community-led plan for the future of a neighbourhood or place. This plan will cover the Muckhart Community Council area.

This plan for Muckhart will lay out a delivery plan for making things happen across our area for the benefit of the whole community over the next 10 years.

It will cover a range of topics like housing, youth, communications, greenspace improvements and active travel routes. It will also lay out ideas around land use, buildings and development and feed into [Clackmannanshire's next Local Development Plan \(LDP\)](#). For more info about Local Place Plans, download this [Easy-Read Guide](#)[1].

Who is writing the Plan?

Muckhart Community Council have formed a steering group to develop the plan. They will ask everyone in the community to give their views and ideas. The steering group will have help from local volunteers, as well as [Place at the Table](#) and [Imagine If](#) who between them have created many similar plans across Scotland and have been employed by MCC with grant funding.

What will be in the Plan?

Anything that you think will improve Muckhart as a place to live, work and visit. We need you to tell us what. Over the next few months, we'll be asking local folk for their ideas about how to make our community an even better place. And we'll be working with you to develop it into a plan to make it happen.

The final plan might include:

- How you want Muckhart to look in 10 years' time.
- Keeping existing initiatives going, ideas for starting new ones or developing local services and facilities.
- What kinds, quality and number of new homes we need in Muckhart.
- Suggested projects to help Muckhart become more sustainable and deal with the impacts of climate change
- Big ideas to help make Muckhart a liveable place for all its residents.

This new Plan will update the [existing Muckhart Community Plan \(2017-2022\)](#)

[1] created for West Dunbartonshire but relevant all across Scotland - visit <https://bit.ly/4iG7LqS>

Why should I get involved?

This is a chance to shape the future of Muckhart for ourselves, our friends and family, and our grandchildren and beyond. We have inherited a place that local citizens have helped shape and make better for us. We can't pay that back, but we can pay it forward with our time and passion.

Will my idea be in the Plan?

That's the aim! There will be many different ideas because Muckhart is a home to many different people. We will work to identify together ideas that will be beneficial and have the most significant impact.

We'd like to get input from as many people as possible. We'll encourage discussion by being available at public events and going direct to local groups to the best of our ability and capacity over the next few months.

How can I get in touch with the Steering Group?

If you'd like to get in touch with the Steering Group, please email us at sec.muckhartcc@gmail.com

When will the Plan be complete?

We are aiming to have the plan completed by October 2025.

How can I have my say?

Fill out our initial survey, running from Saturday 29th March to midnight Monday 21st April (Easter Monday).

Other options for getting involved

- Further discussion groups will be held in May - dates will be announced soon - sign up to stay informed.
- Sign up to our regular [e-newsletter](#) to access dates for opportunities to see us face-to-face. **Go to: muckhart.org.uk/lppcap.**
- Follow updates on the Local Place Plan page of the Muckhart Community Council Website (muckhart.org.uk/lppcap) and our Facebook page.
- If you'd like to chat with us directly you can get in touch by email and we can arrange a phone call. **Email paul@placeatthetable.co.uk**



**Drop pins in our
online
map-based
survey
(phone and
web)**

**Or post-its on
our map**

**Need help? Ask
our buddies**



Invitations to contribute delivered to your door

(and also paper versions)



COMMUNITY SURVEY

What do you think about Muckhart and its future?

- Your views will help us write the Local Place Plan
- Discussion groups will be held in May – dates will be announced soon.

Sign up to our regular [e-newsletter](http://bit.ly/3QMjvvV) to stay informed (visit - <http://bit.ly/3QMjvvV>)

Tell us by Midnight on Monday 21st April (Easter Monday)

Please fill out the online version if you can – this option will make it much easier for the volunteer Steering Group to process and understand your comments.

We are using a tool called Padlet which is a map based survey. You can use it on a mobile or home computer. You can place your responses anywhere on a map of the area, and even upload photos directly from your device. We invite you to walk about the area and comment as you go!

To access the Padlet survey, use the QR code on the right or visit: muckhart.org.uk/lppcap



We aim to make sure everyone in the Muckhart area has a copy of this form. This form is being delivered by hand to every household in the Muckhart Community Council area. Please help by telling your neighbours about the survey and supporting anyone who has difficulty using computers to fill it out. We would like every member of every household (including children and teenagers) to fill out our survey.

If submitting a paper version, please use the form on the right and return it to our dedicated drop-box at Mona's on the High Street. Additional paper versions have also been left at Mona's.

For more copies of the form, you can photocopy it, download it from our webpage or collect more from our drop-box locations.

Please submit **only one response per person**. Surveys are anonymous. Please fill out this form in **BLOCK CAPITALS**. If you need more space, use the back of this sheet or staple an extra sheet to this form.



What do you like about living in Muckhart? Please tell us up to 3 things maximum.



What do you dislike about living in Muckhart? Please tell us up to 3 things maximum.



To change Muckhart for the better, what do we need to work on together, and how? Please tell us up to 3 things maximum.

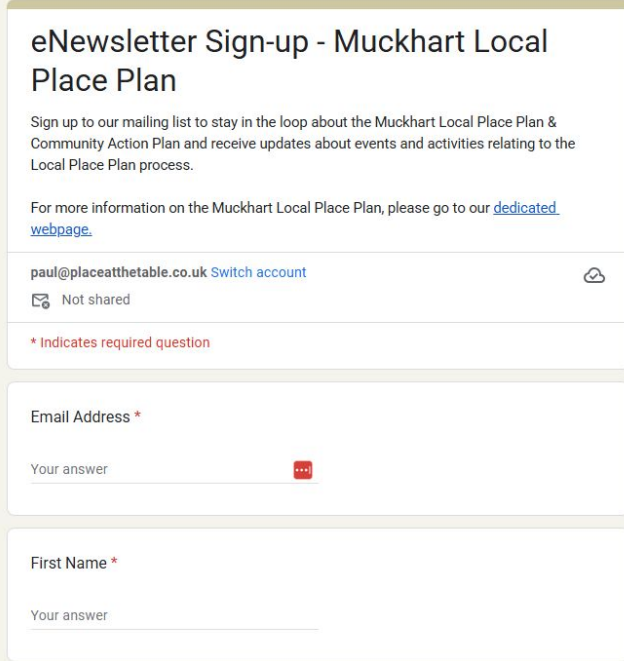
Thank you!



**Encourage your
neighbours and
households to get
involved!**

**Share on social media,
chat over the fence and
at the school gates**





We will treat your information with respect. You can change your mind and unsubscribe at any time by contacting us at sec.muckhartcc@gmail.com. For more information about our privacy policies, please also email sec.muckhartcc@gmail.com. Your data will be deleted at the end of the Local Place Plan process.

[illegible]

In person focus groups and outreach events in May



Information Notice Period in August/ September



Errol Local Place Plan - Information Notice Period Survey

Errol Community Council would like to invite you to take 20 minutes to complete this survey. We would like to receive feedback on and gauge support for the eleven proposals in our [draft Local Place Plan for Errol and the Errol Community Council Area, which can be viewed or downloaded here](#).

The Information Notice period and this survey will run from *Weds 12th March 2025 to midnight on Weds 9th April 2025*. Comments received after this date will not be taken into account.

Context

Perth and Kinross Council is currently developing the Local Development Plan (LDP3), due to be adopted from 2027 and in force for 10 years. We have been active participants in the Big Place Conversation, the Council's consultation process. We are submitting the eleven proposals in this Local Place Plan to the planning authority for assessment and inclusion as statutory policies in LDP3. Our plan also includes an outline Community Action Plan to guide us in the future, but this is not the subject of this survey.

Representing everyone's views – The Information Notice Period

The Information Notice period is a statutory requirement for a minimum 28-day period where local councillors and community councils adjacent to the boundary of the Local Place Plan have a chance to make representations about the draft LPP. The steering group have also taken the decision to go beyond this statutory requirement and use this period to also consult the whole community on the proposals that have been developed.

All comments submitted whether as councillor, citizen or community group during this period will be read and assessed by the Steering Group. We will then decide how best to modify the draft proposals before final submission. Any

Questions Responses **29** Settings

Proposal A - Support High Street as a Local Retail Centre.

Please take a position on this proposal.

Please read the corresponding information on this proposal given in Chapter 2 the Local Place Plan before answering.

- ☐ Support
- ☐ Neutral
- ☐ Object

Image title



I have also read the information given in chapter 3 Statements for this proposal (*doing so is optional, but it helps us to know if you have*)

- ☐ Yes
- ☐ No

(Optional) Please let us know why you have taken the position above and/or what changes you would like to see to make this proposal more acceptable (max 50 words)

Short answer text

Talk to us!

- Celia Norton
- Marion Riddell
- Danny Conroy
- Stuart Dean
- John Anderson
- Matthew Pease
- Patrick Thompson
- Johnathon Bacon

Paul Ede

Principal

Place at the Table

paul@placeaththetable.co.uk

www.placeaththetable.co.uk

Chiara Fingland

Director

Imagine If . Space

hello@imagineif.space

www.imagineif.space



Thanks!

Any Questions?





Local Development Plans & how to influence them...



Town and Country Planning Act 1947

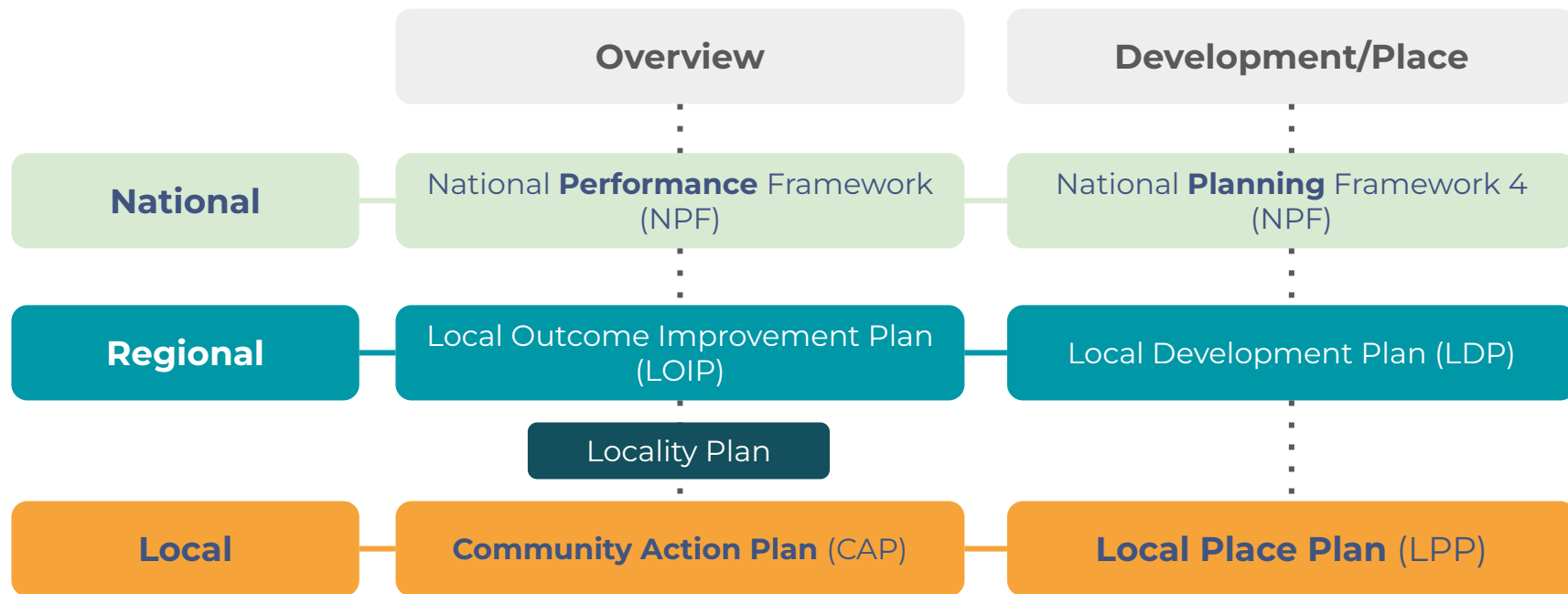
**Landownership rights
VS
Development Rights**





Image: [Pictofigo, CC BY-SA 3.0](#), via Wikimedia Commons

Navigating the policy landscape



National Policy



National **Performance** Framework (NPF)



National Planning Framework 4



Scottish Government
Riaghaidh na h-Alba



National **Planning** Framework 4 (NPF)



Example Local Development Plan

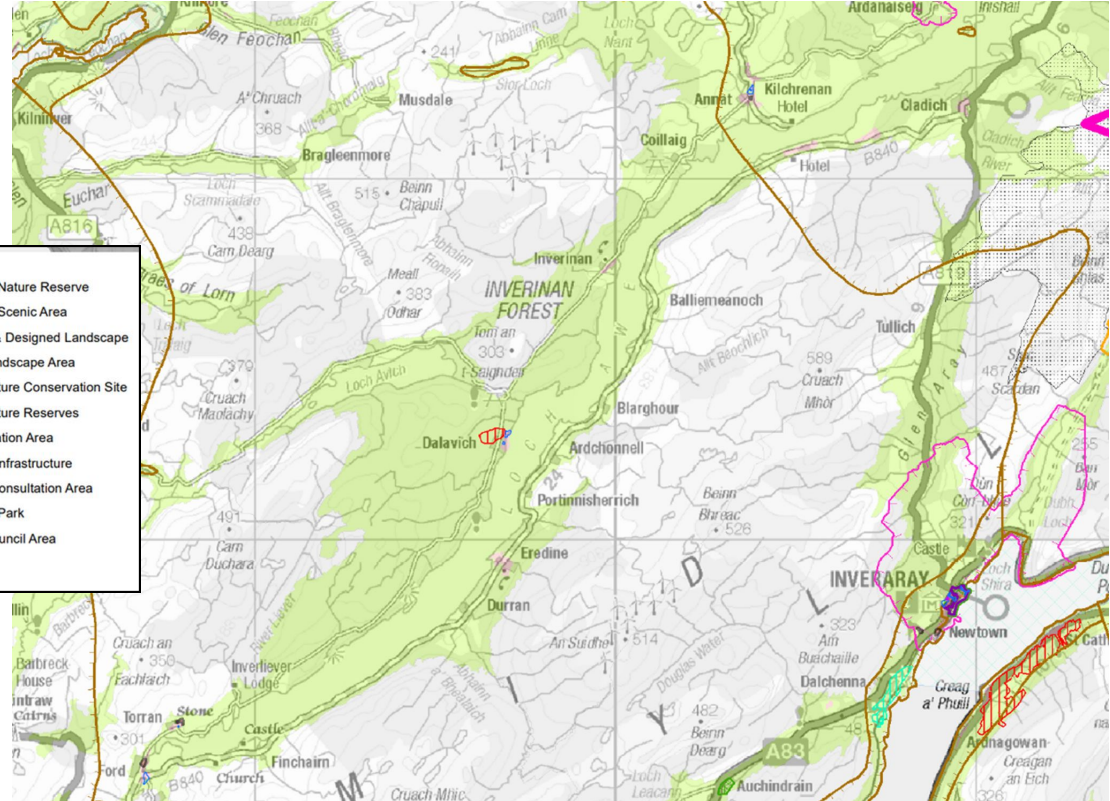
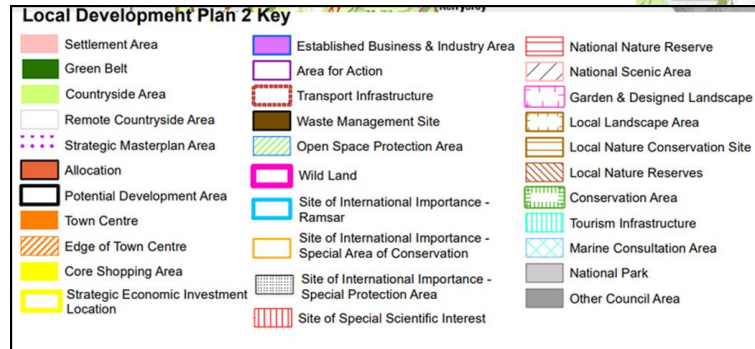


Image: Extract from Argyll & Bute LDP

